



INTERNATIONAL SEAWEED SYMPOSIUM 2025

P R O G R A M B O O K L E T



MAY 4 – 9, 2025 | VICTORIA, BRITISH COLUMBIA, CANADA



TABLE OF CONTENTS

WELCOME MESSAGE FROM THE ISA & PRESIDENT	3
INTERNATIONAL SEAWEED ASSOCIATION COUNCIL MEMBERS	4
WELCOME MESSAGE FROM THE NATIONAL ORGANIZING COMMITTEE	5
NATIONAL ORGANIZING COMMITTEE MEMBERS	6
THANK YOU TO OUR SPONSORS	7
EXHIBIT FLOOR PLAN	9
PLENARY SPEAKERS	10
PROGRAM AT A GLANCE	17
SUNDAY, MAY 4	17
MONDAY, MAY 5	18
TUESDAY, MAY 6	24
WEDNESDAY, MAY 7	33
THURSDAY, MAY 8	34
FRIDAY, MAY 9	42



WELCOME FROM THE INTERNATIONAL SEAWEED ASSOCIATION



Dear Members of the Worldwide Seaweed Community,

It is with genuine excitement and warmth that I invite you to the 25th International Seaweed Symposium (ISS), taking place from May 4-9, 2025, in Victoria, British Columbia, Canada. This special edition celebrates the 25th ISS anniversary, and for this remarkable milestone, we are preparing unforgettable surprises that will be revealed as the date approaches!

The 1st ISS took place in 1952 in Edinburgh, Scotland. It was the first global gathering of scientists and industry professionals focused on seaweed research, production, and applications. Since then, the ISS has grown into a major recurring event, bringing together stakeholders from around the world to advance the field of seaweed science and industry.

But the ISS is more than just a meeting of minds—it is a reunion of friends and colleagues, and an opportunity to meet new faces who share our passion for seaweed. We will explore the latest scientific advancements and business developments globally, while also creating space for long-lasting moments of connection, laughter, and shared experiences.

A special thank you to our National Organizing Committee for their tireless work in ensuring that ISS25 is an outstanding event for all. Their efforts have helped craft an extraordinary program, filled with keynote sessions, panels, interactive workshops, and vibrant social events that will ensure this symposium is both professionally enriching and personally memorable.

The International Seaweed Association (ISA) has proudly hosted the ISS for decades, uniting scientists, industry professionals, and enthusiasts to drive innovation and consistent growth in the seaweed sector. I encourage you to visit www.isaseaweed.org for the latest from our global network.

I can't wait to meet each of you in Victoria, where we will come together to celebrate our community's remarkable journey over the past 73 years. Let's create new memories, share ideas, and keep driving the future of the seaweed industry forward—together!

Warm regards,

Helena Abreu

President, International Seaweed Association Council (2023-2025)





INTERNATIONAL SEAWEED ASSOCIATION COUNCIL MEMBERS

Save the date

Pacific Seaweed Summit

MAY 6-8, 2026

Get updates at
nic.bc.ca/research

NORTH ISLAND COLLEGE



PACIFIC  SEAWEED
INDUSTRY ASSOCIATION

Helena Abreu (President)

Leila Hayashi

(Vice-President, next President elected)

Susan Løvstad Holdt (Secretary-
General)

Ira “Ike” Levine (Treasurer)

Loretta Robertson (Co-Treasurer)

Michael Borowitska (Editor in Chief)

Arif Mazrui

Jaime Zamorano

Jeong Ha Kim

Norishige Yotsukura

WELCOME FROM THE NATIONAL ORGANIZING COMMITTEE



Dear guests of the 25th International Seaweed Symposium,

On behalf of the planning committee, it is our pleasure as co-chairs to welcome you to the 25th International Seaweed Symposium in the beautiful city of Victoria, British Columbia, Canada. We are honoured to gather on the traditional territories of the Ləkʷəŋən (Songhees), Xwsepsum (Esquimalt), and WSÁNEĆ Nations (Saanich Peninsula)—a region rich in natural beauty and home to over 400 known seaweed species.

We have worked diligently to build a dynamic and inclusive program that highlights the finest advancements in our field from around the globe. This year's agenda is rich in opportunities to learn and connect, including poster sessions, workshops, and discussions designed to engage industry professionals, managers, academics, students, and Indigenous Peoples alike.

We hope your time in Victoria will be both intellectually enriching and personally enjoyable, including meeting old friends and making new friends and colleagues. As a centrepiece of our celebration, we will mark the silver anniversary of the International Seaweed Symposium () with a festive evening featuring food, wine, music, dance, and the vibrant community that makes this symposium so special. Additionally, we are excited to share a cultural presentation that promises to leave a lasting impression.

We thank the International Seaweed Association, whose unwavering support makes this symposium possible. A special thanks to our sponsors and exhibitors, whose contributions bring this event to life, and, most importantly, to all of you—the participants. Your enthusiasm, expertise, and engagement are what will make ISS25 an extraordinary experience.

Here's to a memorable week of discovery, collaboration, and celebration. Welcome to ISS25!

Warm regards,

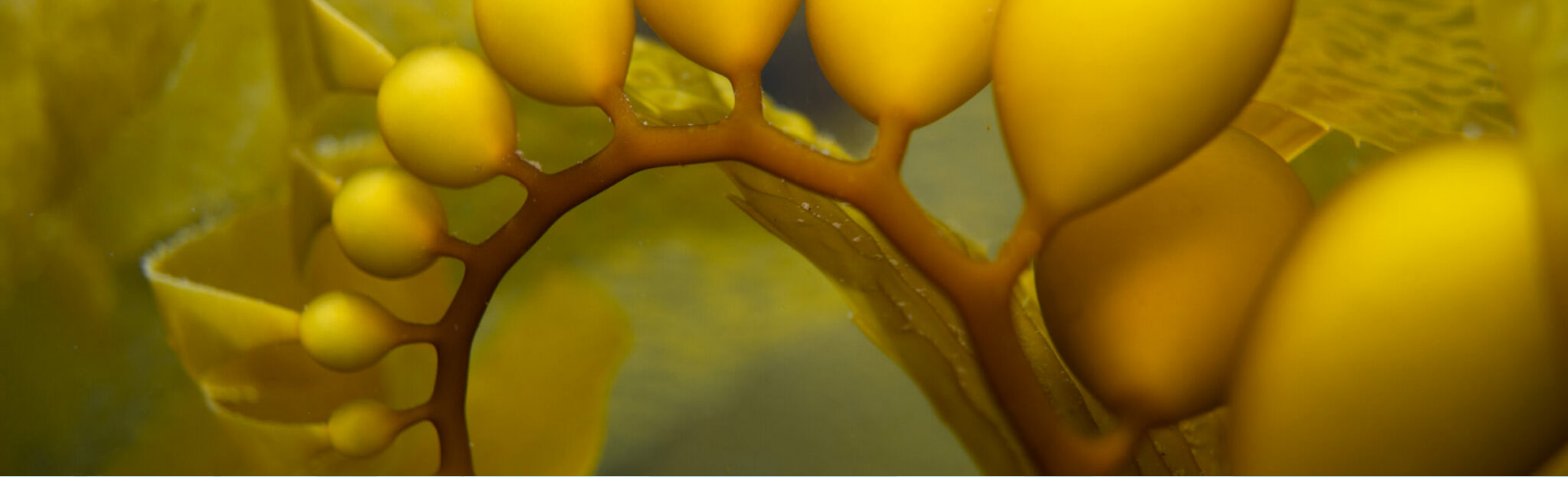
Dr. Maycira Costa

Dr. Patrick Martone

Dr. Laura Wegener Parfrey

Co-Chairs, International Seaweed Symposium 2025





NATIONAL ORGANIZING COMMITTEE MEMBERS

Dr. Maycira Costa (Co-Chair)

Dr. Patrick Martone (Co-Chair)

Dr. Laura Wagener Parfrey (Co-Chair)

Erin Bremner-Mitchell (Secretary; Chair - Marketing Committee; Chair - Social Committee)

Jennifer Clark (Chair - Scientific Program Committee)

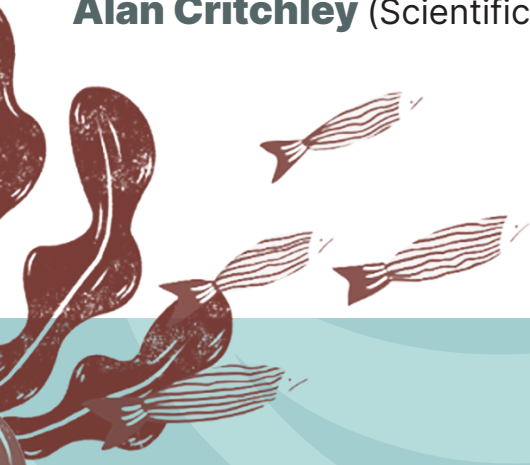
Kylee Pawluk (Chair - Indigenous Advisory Committee)

Soroush Kouhi (Ocean Networks Canada Representative)

Catriona Hurd (Past Chair and ISAC Representative)

Stephen O'Leary (Scientific Program Committee)

Alan Critchley (Scientific Program Committee)



ISS25 SPONSORS

PRINCIPAL SPONSORS



PLATINUM SPONSORS

Cascadia **Seaweed**

GOLD SPONSORS



University
of Victoria

SILVER SPONSORS



National Research
Council Canada

Conseil national de
recherches Canada

Pew



BRONZE SPONSORS



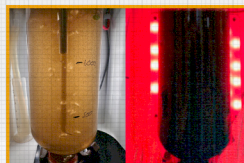
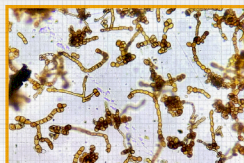
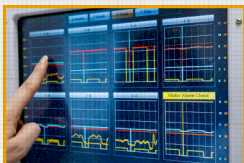
Seaweed Bioreactors

Environmentally controlled & biosecure seaweed seed production. Ideal for hatcheries and researchers.




Reliable
Seed Supply

Accelerating
Research



Industrial Plankton™

Visit www.industrialplankton.com

Made in 

NRC-CNRC

nrc.canada.ca · cnrc.canada.ca

Aquatic and Crop
Resource Development

Développement des cultures
et des ressources aquatiques

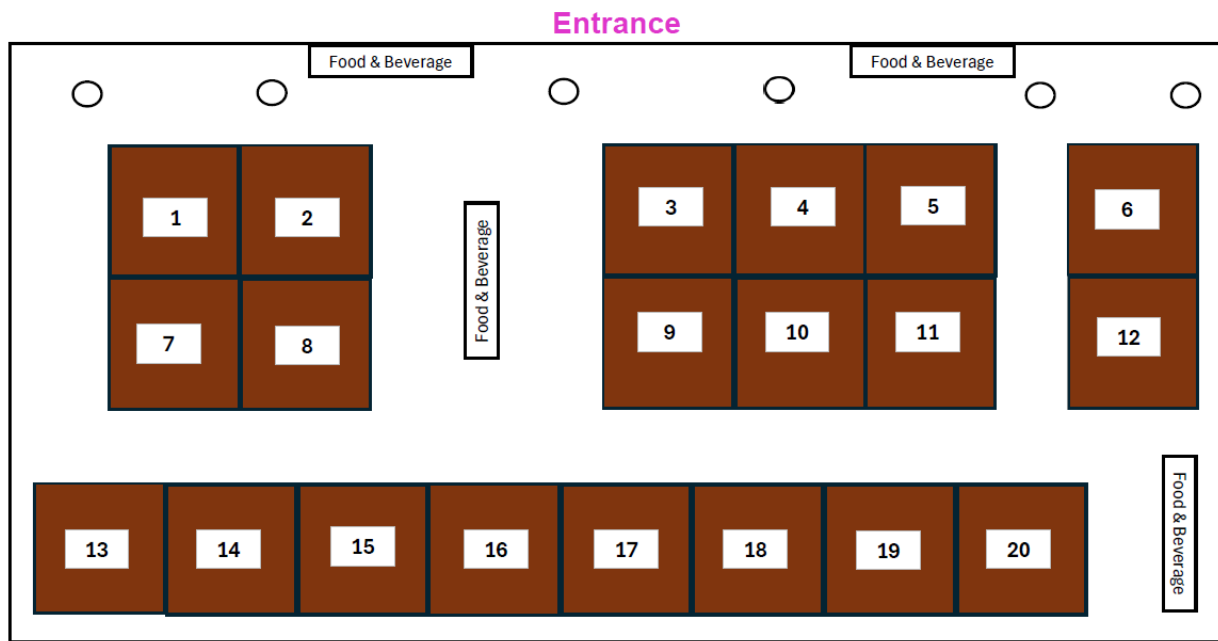


National Research
Council Canada

Conseil national de
recherches Canada

Canada 

EXHIBIT BOOTH ALLOCATIONS



Booth No.	Organization
1	Bee Sea Kelp
2	Cascadia Seaweed
3	C-WEED Mwani
4	C-WEED Mwani
5	Oceans Network Canada
6	AML Oceanographic
7	Government of BC
8	Zanque Aqua Farms
9	Industrial Plankton
10	National Research Canada

Booth No.	Organization
11	ISA
12	The Phycological Society of America
13	Pacific Seaweed Industry
14	ASL Environmental Sciences
15	Southeast Conference
16	North Island College
17	Seaflora Skincare
18	The Pew Charitable Trust
19	West Coast Kelp
20	Canadian Pacifico Seaweeds

PLENARY SPEAKERS



LOUIS D. DRUEHL

Louis D. Druehl, Professor Emeritus, Simon Fraser University, has taught and conducted kelp-oriented research, since the 1960s. He led the 5-university committee that identified the site for the

Bamfield Marine Station. From 1979 to 1984, he directed BC Provincial-funded research leading to the first commercial kelp farm outside of Asia. Since 1985 his SFU students and their students have pioneered DNA-molecular tools in understanding seaweed relationships. His Canadian Kelp Resources, Ltd. conducted kelp productivity studies for GE during the OPEC Crises, offers kelp farming workshop, and works with others on kelp restoration. Over the years, he has worked with Cubans, Russians, Americans, Brazilians on seaweed issues, and offered a UN-sponsored kelp biology course in Chile. Pacific Seaweeds produced with Bridgette Clarkson is a best-seller and award winner. He enjoys the naming of a diatom genus, *Druehlago*, a kelp species, *Saccharina druehlii*, and for a short time a kelp genus, *Druehlia fistulosa*. Presently, he and his wife Rae Hopkins reside in Bamfield where they continue marketing CKR kelp and servicing kelp-interested folks. Hobby-wise Louis is working on his fourth novel, enjoying Phyco-Buddies, and fighting off the ravages of old age.



DR. CAROLINA CAMUS

Dr. Carolina Camus is an Associate Researcher at the Centro i~mar & Center for Biotechnology and Bioengineering (CeBiB) at the Universidad de Los Lagos, and the Director of the Millennium

Nucleus in Marine Agronomy of Seaweed Holobionts (MASH). Carolina is an ecologist and phycologist dedicated to sustainable seaweed production from ecological and agronomic perspectives. Her research is primarily centered around the sustainable aquaculture of macroalgae, using two species of economic and ecological importance as study models (*Gracilaria chilensis* and *Macrocystis pyrifera*). She delves into understanding the drivers of macroalgae productivity, managing their complex life cycles, and, recently, incorporating their interactions with associated microbial communities under the concept of the holobiont.

Her career spans academia, the private sector, and communities, allowing her to bridge the gap between knowledge generation and practical application for productive, social, and environmental benefits. This includes her participation in biotechnological projects demonstrating the feasibility of fermenting and producing biofuels from seaweed biomass, pilot projects transferring seaweed cultivation technology to artisanal fishermen, and current evaluations of the ecosystem services provided by cultivating giant kelp.

PLENARY SPEAKERS



DR. SYLVAIN FAUGERON

Sylvain Faugeron is a seaweed evolutionary ecologist, interested in deciphering the processes that drive the dynamics of marine biodiversity along the coast, in particular, the emergence and limits of

adaptations to the environmental heterogeneity. He combines population genetics with environmental modelling, experimental ecology and physiology. One particularly motivating study model is the incipient domestication observed in farmed seaweeds, not only to decipher the eco-evolutionary processes that affect seaweeds in such strongly human-impacted ecosystems, but also as an opportunity to develop applied sciences for the interest of a sustainable seaweed production. In this context, he has assembled a team of researchers, called Marine Agronomy of Seaweed Holobionts (MASH) to promote a seaweed biology that sustains the development of a seaweed marine agronomy. This research led to the establishment of a large collection of live seaweeds supporting both basic research and the seaweed aquaculture sector. He has been advocating for a sustainable management of marine genetic resources, participating in policy-making in Chile.

Sylvain is a Professor at the Catholic University of Chile and the director of the marine station, ECIM, located on the coast of central Chile. He leads a large transdisciplinary team within the university, to promote joint research on different aspects related with the sustainability of coastal socio-ecological systems, such as marine biodiversity dynamics and conservation biology, physical processes of the coastal ocean, marine agronomy and ecosystem engineering, marine biotechnology and the art-sciences interactions for education and knowledge transfer.

OCEAN
NETWORKS
CANADA

Ocean observatories
are advancing research
into climate solutions and
sustainable aquaculture

Data from this AML-6 scientific instrument is available in ONCs Oceans 3.0 portal. Data tells us how ocean conditions differ across kelp-based ecosystems and change over time.

Visit ONC at Booth #5 to learn more!

ONC is one of Canada's Major Research Facilities and an initiative of the University of Victoria.

Credit: Adapted from image supplied by Colin Bates, Cascadia Seaweed

PLENARY SPEAKERS



CHIEF ABRAHAM PELKEY

Chief Abraham Pelkey of STÁUTW First Nation was elected on July 6th, 2023. Chief Pelkey served on Council for four terms with 8 years in total. His leadership is informed

by over two decades of experience spanning various sectors, including construction, marine industry, and Indigenous governance. Chief Pelkey managed and led multiple portfolios including land, finance, and housing, while holding positions of Chair of the W̱SÁNEĆ School Board, Economic Development, and the Lands Management Committee. His journey has been characterized by a commitment to excellence, leadership, and the strategic oversight of multifaceted projects, teams and initiatives. Chief Pelkey's praxis is rooted in the belief that knowing our language enables us to know who we are, and where we come from. Our language, culture, teachings and history ensure that we continue to move forward in a sustainable manner that respects and is conscious of future generations. With the support of his community, Chief Pelkey will continue to lead and influence positive change. He remains dedicated to leveraging his knowledge, skills, and experience for the continued growth, well-being, and prosperity of STÁUTW.

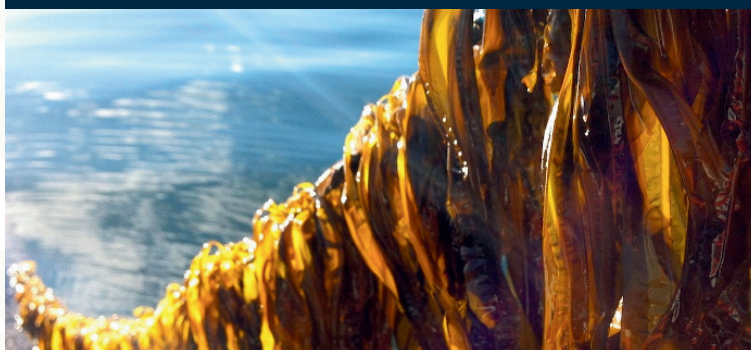


DR. CATRIONA L. HURD

Dr. Catriona L. Hurd is a phycologist with expertise in the physiological responses of seaweeds to environmental drivers including light, temperature, water motion, dissolved inorganic carbon and nutrient supply. Her research currently focusses on the impacts of ocean acidification, ocean warming and marine heat waves on seaweed metabolism, the development of seaweed aquaculture in Australia, and on assessing the role of seaweeds in marine Carbon Dioxide Removal.

ALASKA MARICULTURE CLUSTER

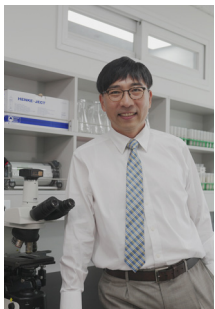
a project of Southeast Conference



Developing a viable and sustainable mariculture industry producing shellfish and seaweed for the long-term benefit of Alaska's economy, environment, and communities.

ALASKAMARICULTURECLUSTER.ORG

PLENARY SPEAKERS



DR. JANG KIM

Dr. Jang K. Kim is a Professor of Marine Science at Incheon National University (INU), Korea. He received his undergraduate degree from INU, and his MSc and Ph.D. from the University of Connecticut (UConn), USA.

Dr. Kim has served on various international, national and provincial committees including, UNDP/GEF YSLME Steering Committee, Yellow Sea Peace Forum, Coastal Management Planning Committee of Korea, Coastal Management Council of Incheon, etc. Dr. Kim is also an associate editor/editorial board member of *Algae*, *Journal of the World Aquaculture Society*, *Phycological Research*, *Fisheries and Aquatic Sciences*, and *Toxicology and Environmental Health Sciences*.

During the past 25 years, his research has focused on interactions between marine algae and their environment. He is most interested in seaweed aquaculture and its applications. Specifically, Dr. Kim has worked on open water and land-based seaweed aquaculture, integrated multi-trophic aquaculture, and blue carbon ecosystem-based carbon dioxide removal. He has also conducted numerous collaborative research projects with international partners in the Americas, Europe, and Asia. He has hosted many knowledge exchange programs between Korea and the US or Europe for seaweed aquaculture and environmentally sustainable aquaculture.



DR. JEAN-BAPTISTE THOMAS

Dr. Jean-Baptiste Thomas is a researcher at KTH Royal Institute of Technology (Stockholm, Sweden) specializing in life cycle assessment (LCA), carbon accounting, and sustainability

in marine production systems. He applies systems thinking to assess the environmental impacts of seafood, algae value chains, and bio-based innovations.

JB has worked with seaweed and marine bioresources since 2012, focusing on their role in sustainable food systems and climate mitigation. He is actively involved in harmonizing LCA methods for algae across EU projects to improve consistency and applicability. With a PhD awarded in 2018, he works closely with industry and policymakers to ensure sustainability assessments are both rigorous and relevant.

In the world of LCA, he has a particular interest in prospective LCA, exploring how future technologies could shape sustainability outcomes. He also advocates for stakeholder participation in LCA, ensuring assessments reflect real-world needs and support informed decision-making. By integrating scientific insights with practical applications, JB aims to contribute to more sustainable and resilient marine production systems while maintaining a balanced and holistic perspective on environmental trade-offs.

PLENARY SPEAKERS



DR. KAREN FILBEE-DEXTER

Dr. Karen Filbee-Dexter is a marine ecologist studying the drivers and patterns of long-term change in coastal ecosystems. Her research centers on climate-driven

changes to kelp forests, including shifts to alternate ecosystem states such as turf reefs and sea urchin barrens, and expansion along some Arctic coasts. She is an expert in the production and export of seaweed detritus, and the role seaweed blue carbon plays in the broader ocean carbon cycle. She has helped develop new restoration approaches for kelp forests using Green Gravel, as well as explored novel methods to fund kelp conservation and restoration. Karen holds a Future Fellowship at the University of Western Australia and works as a researcher at the Institute of Marine Research in Norway. She obtained her PhD from Dalhousie University and is an adjunct professor at Université Laval in Canada.



DR. MICHAEL Y. ROLEDA

Dr. Michael Y. Roleda is a Professor at the Marine Science Institute of the University of the Philippines-Diliman. His passion for tropical seaweed started in the early 1990s cataloguing

biodiversity and worked on the biology and biochemistry of an agarophyte. Further graduate study and postdoctoral fellowships in Germany, Sweden, and Scotland enabled him to work on cold-temperate and polar seaweeds and microalgae with emphasis on their physiological responses to global climate change stressors (e.g., UVR, ocean warming and acidification). In 2004, he went bipolar-participated in land-based expeditions to Spitsbergen in the Arctic and King George Island in the Antarctic. His search for a niche brought him to the Southern Ocean in New Zealand and then back to the North Atlantic in Norway, where he started working on the food and feed applications of seaweeds. He came full circle in 2018—back in the Philippines working on the biodiversity of carrageenan-producing eucheumatoids (*Kappaphycus* spp., *Eucheuma denticulatum*, and *Betaphycus gelatinus*), led and improved the in vitro and hatchery gene banks with >200 unique strains undergoing genotypic and phenotypic characterizations, understanding their ecological breadth and susceptibility to pest and diseases, and innovating mitigating measures.



Salwan Georges/The Washington Post via Getty Images

Pew and Partners: Building a Foundation for Sustainable Seaweed Farming

The Pew Charitable Trusts works in North America to support a seaweed farming sector that restores ocean health, bolsters communities, and includes the voices of Indigenous and small-scale producers.

Learn more at pewtrusts.org/ISS25

Pew



The Province of B.C. manages aquatic plants through:

- Permitting
- Partnerships with First Nations
- Stewardship
- The Coastal Marine Strategy
- Aquatic Plant Policy



ZanQue
Seaweed the Difference

Your Trusted High-Quality Seaweed Supplier.

Why ZanQue ?



Premium Quality – Ethically sourced, superior-grade seaweed.



Sustainability First – Eco-friendly farming & processing.



Community-Centric – Supporting 450+ local farmers.




Innovation Driven – Research for a greener future.

Our Offerings:

- Sustainable Seaweed Farming
- High-Quality Processing
- Expert Consulting Service

Get in touch

Contact us to explore our activities from farming, processing and supplying.

 **ZanQue Aqua Farms Limited,**
P.oBox 3537
Chukwani, Zanzibar
Tanzania

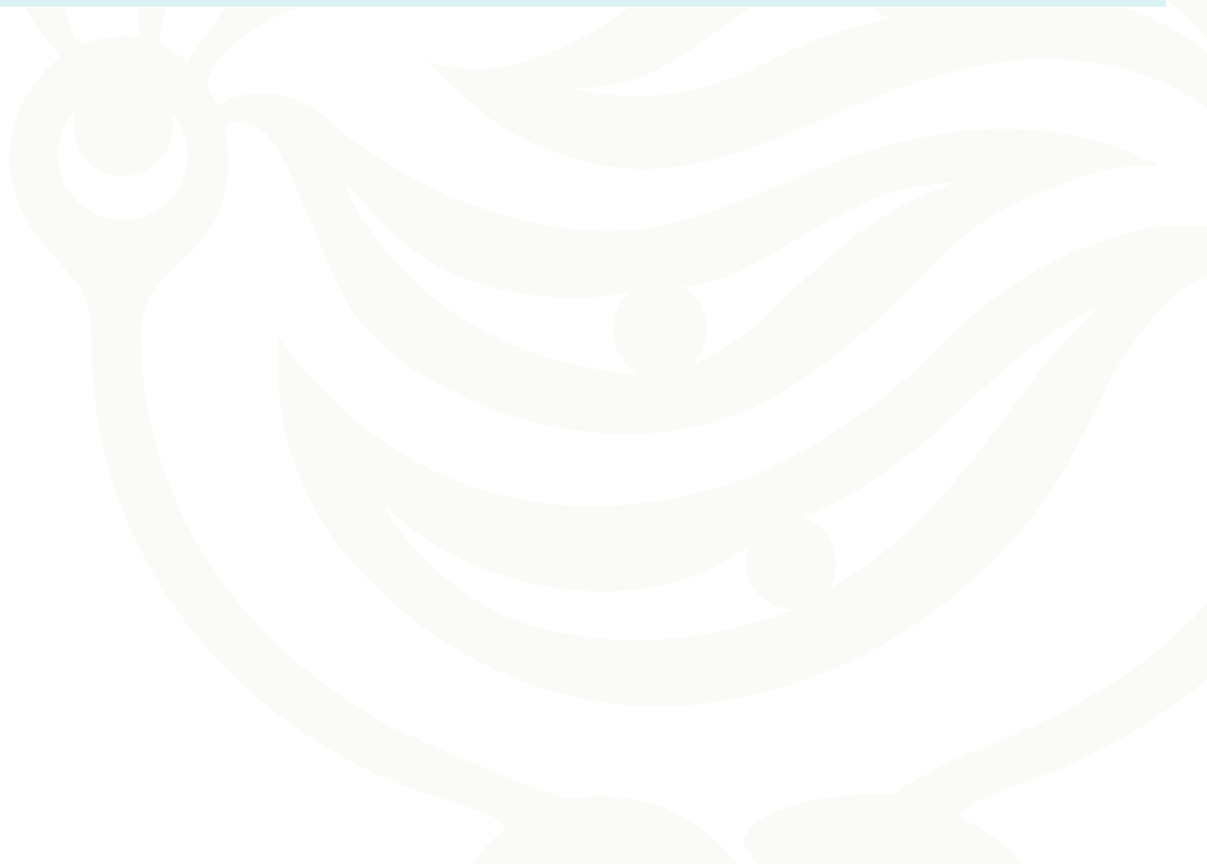
 +255 (774) 440044
 +255 (778) 866689
 info@zanque.co.tz
 www.zanque.co.tz



SUNDAY, MAY 4



TIME:	SESSION:
09:00 AM - 01:00 PM	Workshop #5 Exploring Needs and Opportunities for Improved Monitoring of the Benefits and Impacts of Seaweed Farming in Alaska and British Columbia - Location: Lecture Theatre, Level 1
09:00 AM - 05:00 PM	Workshop #1 Kelp Forest Challenge: Regional strategies and action plans for protecting and restoring 4 million hectares of kelp forests by 2040 - Location: Colwood, Level 2
09:00 AM - 05:00 PM	Workshop #9 Designing Multiple Driver Experiments - Location: View Royal, Level 2
09:30 AM - 12:30 PM	Workshop #3 Seaweed Biorefineries and a Future Circular Bioeconomy: Are We Really Ready? - Location: Sidney, Level 2
01:00 PM - 03:30 PM	Workshop #2 A Comprehensive Monitoring Evaluation and Learning Framework for Restorative and Regenerative Seaweed Aquaculture - Location: Sidney, Level 2
02:00 PM - 04:00 PM	Workshop #4 Addressing fundamental gaps in seaweed taxonomic knowledge - Location: Lecture Theatre, Level 1
02:00 PM - 04:30 PM	Pre-Symposium Tour #2 Clover Point Intertidal Tour - Location: Offsite
03:45 PM - 05:30 PM	Workshop #6 Edible Seaweeds of the Pacific Northwest: A Wild Seaweed Tasting - Location: Sidney, Level 2
05:30 PM - 08:00 PM	Welcome Reception Location: Level 2



MONDAY, MAY 5

08:30 AM - 09:15 AM	Opening Ceremony		
09:15 AM - 10:00 AM	A 200-year British Columbia seaweed perspective from a 1900 U.S. invasion to the challenging 2100 future, dedicated to Klaus Luening (1941-2023) whose studies advanced kelp mariculture Dr. Louis D. Druehl		
10:00 AM - 10:30 AM	<i>Morning Coffee Break</i>		
10:30 AM - 12:00 PM	Special Session Seaweed Wizards Michael Borowitzka, Charles Yarish, John Bolton, Michael Guiry, Eurico Cabral de Oliveira, Masao Ohno		
12:00 PM - 12:30 PM	Special Session Algae Foundation Dr. Ike Levine		
12:30 PM - 01:30 PM	<i>Lunch Break</i> Location: Tented Area, Royal BC Museum, 675 Belleville Street		
01:30 PM - 02:30 PM	Marine Agronomy of Seaweed Holobionts Dr. Sylvain Faugeron		
02:30 PM - 03:30 PM	<i>Concurrent Sessions</i>		
THEME:	O 1.1 Aquaculture Methods	O 1.2 - Microbiome of Seaweeds	O 1.3 - Breeding and Strain Selection
ROOM:	Lecture Theatre	Saanich	Oak Bay
02:30 PM - 02:45 PM	Natural Collection of Luche (Pyropia/ Porphyra) in Nets for Culture Along the Coasts of Southern Chile (Los Lagos Region) as a Nature-Based Solution (Nbs) for Coastal Communities Marcela Avila	Decoding Microbial Dynamics on Seaweed: Implications for Process Optimisation and Quality Control Kizzie Amoree	Growth and Reproduction of Saccharina latissima Gametophytes from Two Locations with Different Salinity Emma Krüger Jensen
02:45 PM - 03:00 PM	Beyond Tradition: Indigenous Kelp Harvesting in Global Supply Chains Alessandro Viscomi	Dimethyl Sulfoniopropionate (DMSP) Metabolism in Green Tide Causing Seaweed Catherine Philip	Reproductive Phenology and Thermal Constraints on Fertilization in Southern Bull Kelp Durvillaea Potatorum (Order Fucales): Implications for Cultivation Vincent HS Yap
03:00 PM - 03:15 PM	B.C. Provincial Government Regulation of Kelp and Seaweeds Kevin Romanin	The role of microbiota in kelp gametophyte development and resilience to thermal stress Reina Veenhof	Global Interfertility and Heterosis in Sugar Kelp Populations: A Next Step in Sugar Kelp Breeding Job Cohen
03:15 PM - 03:30 PM	Investigating The Use of Natural Fibres Historically Used By Māori, As a Substrate to Grow Macrocystis Pyrifera, Integrating Te Ao Māori Into The Regeneration of Kelp Forests Within Te Whanganui-A-Tara, Aotearoa Māia-te-o-ho Holman-Wharehoka	Red Endophytic Filamentous Algae in Hatchery-Cultivated Kappaphycus Striatus Shienna Mae Gonzaga	Enhancing Gametogenesis to Improve Commercial Use of Gametophyte Germplasm for Sugar Kelp (Saccharina latissima) Aquaculture Daniel Gossard
03:30 PM - 04:00 PM	<i>Afternoon Coffee Break</i>		

Join the Official Symposium Mobile App



iOS

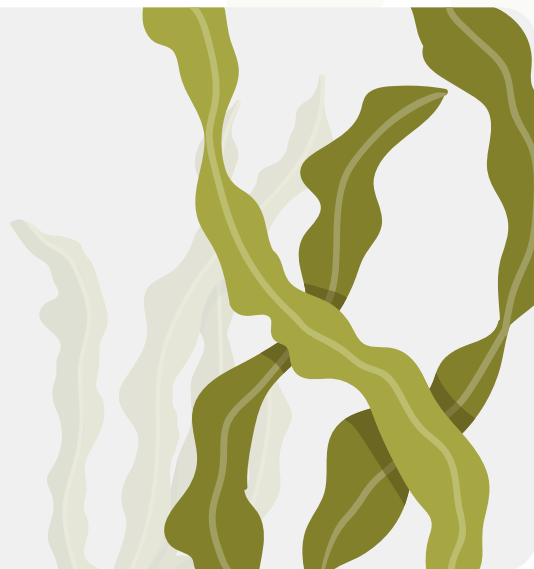


Android

Wi-Fi

Network: VictoriaConference

Passcode: #ISS25



O 1.4 - Chemical Ecology	O 1.5 - Kelp Restoration	O 1.6 - Policy Development	
Esquimalt	Salon BC (Carson Hall)	Sidney	
Chemical Cues Influencing Cell Polarity in <i>Dictyota dichotoma</i> Eliane Zakka	Integrating Breath-Hold Diving Techniques into a Low-Cost Community-Based Methodology for Kelp Restoration in Te Whanganui A Tara, Aotearoa New Zealand Hannah Ryall	Applied Seaweed Research and Industrial Development - A Success Story from Sweden Fredrik Gröndahl	
Deciphering the Biosynthesis of Halogenated Compounds in Brown Algal Model Using Knock-Out Mutants, Transcriptomics and Metabolomics Analysis Eurydice Peti-Jean	Successful Kelp Forest Restoration Will Rely on Diverse Partnerships and Community-Based Networks Hayley Swanlund Jan Freiwald	Assessing Environmental DNA (Edna) as a Method for Quantifying Biodiversity Enhancement Associated with Seaweed Aquaculture Hayley Swanlund	
	Chiixuu TII iinasdIII: Learning from indigenous Haida and scientific leadership in kelp restoration Lynn Lee	Navigating the Uncharted Waters of Seaweed Safety Jens J Sloth	
	From Little Things, Big Things Grow: Using Tree Islands to Restore Marine Forests Catalina Musrri		

Afternoon Coffee Break

MONDAY, MAY 5

THEME:	MS 1.1 - The Future of Global Seaweed Biobanking: Combining Industrial Applications and Biodiversity Conservation	O 1.8 - Distribution and Climate Stress	O 1.9 - Sustainable Seaweed Cultivation
ROOM:	Lecture Theatre	Saanich	Oak Bay
04:00 PM - 04:15 PM	Introduction to Mini Symposium Laurie Hofmann & Mélanie Cueff	Physiological and Biochemical Response of the Kelp <i>Laminaria Hyperborea</i> to Increasing Temperatures along Its European Distribution Gradient Florian Stahl	Social Participatory Approach to Sustainable Seaweed Aquaculture in Sabu Raijua Island-Indonesia Muhammad Ziaul Haq
04:15 PM - 04:30 PM	Seaweed Biobanking: Objectives, Models, and Links to Aquaculture and Conservation Sylvain Faugeron	Tidal Height Normalization (THN): A New Approach to Benthic Organisms Zonation on the Intertidal Zone Mathieu Helias	Kelp Cultivation and Stewardship in Toxw Nach Leeann Ennis
04:30 PM - 04:45 PM	Global Coordination in Identifying and Monitoring Seaweed Genetic Resources Daniela Lucente	Evaluating The Spatial-Temporal Dynamics and Ecological Effects of Kelp-Encrusting Bryozoans Across The British Columbia Coast Sarah Schroeder	Tackling Misidentification and Propagation Challenges in Seaweed Farming in the Sulu Archipelago Sitti Zayda Halun
04:45 PM - 05:00 PM	Applications of Seaweed Biobanking for Sustainable Industry in Korea Eun Kyoung Hwang	Monitoring Kelp Forest Health: A Monitoring Guidebook for Restoration Practitioners and Marine Stewards Scott Bohachyk	Kelp Farming Led by the Tsawout First Nation: A Nature-Based Solution for Sustainable Economic Benefits in the Salish Sea Jennifer Claxton
05:00 PM - 05:15 PM	The Role of Seaweed Biobanking in Supporting Aquaculture Industry Needs Gabriel Montecinos Arismendi	Comparing In Situ Kelp Surveys with Aerial Drone Surveys to Estimate Kelp Biomass Luba Reshitnyk	Scaling Regenerative Seaweed Farming in Aotearoa New Zealand: A Multi-Species Approach Ryan Marchington

O 1.10 - Macroalgal Diversity	MS 1.2 - Progress and Challenges in Large-Scale Tropical Seaweed Cultivation	O 1.11 - Novel Seaweed Applications	O 1.12 - Applications in Human Health
Esquimalt	Salon BC (Carson Hall)	Sidney	Colwood
Macrocystis ecomorphs 'intergrifolia' and 'pyriferia': differences in early stages productive traits Alejandro Buschmann	Seaweed at Scale: The road ahead for Tropical seaweed as a Biofeedstock Nelson Vadassery	Developing Biomining Applications of Seaweeds for Sustainable, Domestic Production of Critical REE Mineral Feedstocks Thomas Mumford	Seaweed Bioprospecting Using Machine Learning and Omics Data Cintia Iha
An undescribed species of Arthrocardia (Corallinales, Rhodophyta) from South America and the first record of geniculate coralline from Antarctica Andres Mansilla	From "too young" to "too old": reflections on sixty years of phyconomy bricolage on ocean farms Iain Neish	Seaweed Polysaccharide (Ulvan) Crop Protection Products for Horticulture Marie Magnusson	Impact of a Mycosporine-Like Amino Acid-Enriched Extract from the Red Seaweed Palmaria Palmata in the Mouse: Bioavailability and Effect on Alzheimer's Disease Neuropathology Lucie Beaulieu
Characterizing Morphological Variability in the Feather Boa Kelp, Egrecia Menziesii, Across California Over Time Using Historical and Contemporary Pressings Adi Khen	Exploring Wild Eucheumatoid Genetic Diversity in Indonesian Coastal Regions Eka S Prasedya	The Biostimulants Prepared from Kappaphycus Alvarezii Extracts Improves Plant Growth, Nutrient Use Efficiency, and Rhizosphere Microbial Community in the Presence of Inorganic Fertilizers Pushp Sheel Shukla	ALGAE4IBD: Innovative and Cost-Effective Solutions for Inflammatory Bowel Disease Patients from ALGAE Benoit Queguineur
Laminaria Farlowii Genome Sequencing and Seedbanking for Conservation and Aquaculture Michael Marty-Rivera	Charting the Path for an International Tropical Seaweed Resilience Institute Karlotta Rieve	What Are the Mechanisms of Action to Plant Biostimulation Behind Key Seaweed Compounds? The Biostim Almap Project Franck Hennequart	Supplementation of Seaweed Extracts to the Diet Reduces Symptoms of Alzheimer's Disease in the Appsweps16e9 Mouse Model Monique Mulder
Tearing And Healing, Rather Than Cell Death, Underlie Blade Splitting in the Bull Kelp Nereocystis Luetkeana Alana Breitkreutz	A First Look at Ecological Aspects of Large-Scale Tropical Seaweed Farming Mahima Jaini	Synergistic Activation of Grapevine Defense Mechanisms Against Downy Mildew by Ascophyllum nodosum Extract and Pseudomonas fluorescens CHA0 Ramin Bahmani	Harvesting and Conversion of Sargassum for Production of 'Sustainable Aviation Fuel' Intermediates (Macro2SAF) John Benemann

MONDAY, MAY 5

THEME:	MS 1.1 - The Future of Global Seaweed Biobanking: Combining Industrial Applications and Biodiversity Conservation	O 1.8 - Distribution and Climate Stress	O 1.9 - Sustainable Seaweed Cultivation
ROOM:	Lecture Theatre	Saanich	Oak Bay
05:15 PM - 05:30PM	A European biobanking strategy for Safeguarding Seaweed Genetic Material and the AWI case study Inka Bartsch & Laurie Hofmann	Investigating the Refugial River Mouth Hypothesis: Assessing the Effects of Low Salinity Conditions on the Population Dynamics of Nereocystis Luetkeana Duncan Jackson	Indigenous Resurgence in the Blue Economy: Relational Values to Guide Kelp Mariculture Sarah Gutzmann
05:30 PM - 05:45 PM	Discussion and Synthesis Laurie Hofmann & Mélanie Cueff	Synthesizing Kelp Canopy Data for a Synoptic View of Floating Kelp Distribution in Washington State, USA Danielle Claar	Diversification: A Model of Climate Change Adaptation by the Mi'gmaq and Wolastoqey Communities Marie-Helene Rondeau
05:45 PM - 06:00 PM		Identifying suitable areas for canopy-forming kelp along an environmental gradient in the Northeast Pacific Maycira Costa	The Role of Private Sector for the Sustainability of Tanzanian Red Seaweed Value Chain Virginie Le Masson
06:30 PM - 08:00 PM	Student and Early Career Researcher Social Night Location: Herald Street Brew Works, 506 Herald Street, Victoria, BC		
06:30 PM - 09:00 PM	Indigenous Social Location: Sunset Labs Victoria, 400 Herald St, Victoria, BC V8W 3N8		

O 1.10 - Macroalgal Diversity	MS 1.2 - Progress and Challenges in Large-Scale Tropical Seaweed Cultivation	O 1.11 - Novel Seaweed Applications	
Esquimalt	Salon BC (Carson Hall)	Sidney	
Resolving Gelidium Pulchellum Cryptic Diversity in France Using DNA Barcoding Guilhem Cozien	Farm Systems for Large-Scale Tropical Seaweed Cultivation in Exposed Waters Clifford Goudey	From Natural Rockpools to Optimized Cultivation: Exploring the Potential of Ulva as a Source of High-Value Substances Vanessa Nardini	
	Interrogating The Kalv Genome and Transcriptome to Dissect the Impact of Light Stress on Carrageenan Synthesis: Targets for Genetic Advancement? Scott Fahrenkrug		
	Growth And Nutrient Remediation Potential of Farmed Tropical Seaweeds in the Gulf of Mexico Kristen Davis		

Student and Early Career Researcher Social Night
Location: Herald Street Brew Works, 506 Herald Street, Victoria, BC

Indigenous Social
Location: Sunset Labs Victoria, 400 Herald St, Victoria, BC V8W 3N8



TUESDAY, MAY 6

08:30 AM - 09:30 AM	Harnessing Indigenous Knowledge: Kelp Farming for Food Sovereignty, Economic Sustainability, and STÁUTW (Tsawout) First Nation's Conservation Efforts in the Salish Chief Abraham Pelkey		
THEME:	O 2.1 Physiological Response to Climate Stress	O 2.2 Microbiome of Seaweeds 2	O 2.3 - Carbon Cycling
ROOM:	Lecture Theatre	Saanich	Oak Bay
09:30 AM - 09:45 AM	Species-Specific Recalcitrant Macroalgal Dissolved Organic Carbon and Fluorescence Dynamics Typically Outweighed by in Situ Heatwave and Bleaching Stress Responses Andrew Kalani Carlson	Sugar Rush! Microbial Degradation of Brown Algal Fucoindans Jessica Carstens-Kass	Exploring Blue Carbon Limits: Insights from a Small-Scale Kelp Farm in Subarctic Region Fanny Noisette
09:45 AM - 10:00 AM	Depth Matters: How Mesophotic Habitats Shape the Ecology and Climate Resilience of Kelp Forests in the Galapagos Salome Buglass	Microbial Implications of Nutrient Sources for Marine Macroalgae Craig Nelson	Sweet Success: Structural Variability of Fucose-Containing Sulfated Polysaccharides as a Strategy to Challenge Bacteria? Margot Bligh
10:00 AM - 10:15 AM	Genomic Insights into Deep Refuges and Warm Adaptation in Western Australia's Kelp Forests Antoine Minne	Microbes Can Mediate Climate-Driven Effects on the Maintenance of Seaweed Habitats Ziggy Marzinelli	
10:15 AM - 10:30 AM		Temporal and inter-individual microbiome variation in <i>Fucus distichus</i> Andrea Jackman	
10:30 AM - 11:00 AM	Morning Coffee Break		



Harnessing Indigenous Knowledge: Kelp Farming for Food Sovereignty, Economic Sustainability, and STÁUTW (Tsawout) First Nation's Conservation Efforts in the Salish
Chief Abraham Pelkey

O 2.4 Applications in Agriculture	O 2.5 - Monitoring and Distribution	O 2.6 - Diversity of Corallines	O 2.7 - Policy Development 2
Esquimalt	Salon BC (Carson Hall)	Sidney	Colwood
Exploring The Anti-Methanogenic Effects of Water-Based Extracts from Asparagopsis Taxiformis in an in Vitro System Simulating Rumen Fermentation Mihai-Victor Curtasu	Multiple Ways of Knowing and Adaptive Management in the Northern Shelf Bioregion: An Indigenous-led regional kelp monitoring initiative to inform conservation, resilience and marine spatial planning Jennifer Temple	The Importance of Coralline Algae for the Stability and Substrate Availability of the Unique Submerged Columns of the Ikka Fjord, SW Greenland Lina M. Rasmussen	Ghvtlh-k'vsh shu'-srnelh-'i~ (Kelp Guardians) of California's North Coast Rosa Laucci
Dulse And Xylanase for Gut Health of Piglets: Can We Release Prebiotics from the Fibre Matrix? An in Vitro Study Élisabeth Chassé	A Study on the Status of Urchin Barren Investigation in South Korea Using Airborne Hyperspectral Imagery Hyun Min Lee	Seaweed Exploration in the Falkland Islands and South Georgia: New Insights into Coralline Algal Diversity of the South Atlantic and Southern Ocean Rob Mrowicki	A Novel Risk Assessment Methodology for Sustainable Management of Seaweed Resources David Milla Figueras
The Red Seaweed Asparagopsis taxiformis to Mitigate Methane Emissions in Livestock: What have we learned from 5 years of research Jennifer Smith	Very High-Resolution Habitat Mapping of Intertidal Rocky Shore Using Drone Visible Imagery, Improved by Red-Edge and Infrared, along with Lidar Topography Agathe Bouet	Assessment of Rhodolith-Forming Species Diversity in British Columbia Uncovers Novel Cryptic Diversity, The Occurrence of Hybrid Rhodoliths and Geniculate Taxa Exhibiting a Rhodolith-Like Morphology Keelie Taylor	Enable Conditions for Community-Led Kelp Restoration in Northern Patagonia: Integrating Indigenous Knowledge for Ecological and Economic Resilience Scott Bohachyk
Effect of Temperature on Growth, Photosynthesis, and Bromoform Production of the sub-tropical red algae, Asparagopsis taxiformis Tess Rounds	Co-Designing SEEA EA Accounts with The Traditional Owners of the Seascape Silva Larson		

Morning Coffee Break

TUESDAY, MAY 6

THEME:	MS 2.1 - Restoration and Conservation of Global Seaweed Stocks	MS 2.2 - The Chemical Language of the Seaweed Holobiont	O 2.8 - Ecology of Algal Blooms
ROOM:	Lecture Theatre	Saanich	Oak Bay
11:00 AM - 11:15 AM	Understanding the State of the World's Seaweeds and what must be done to protect them Sophie Corrigan	Bacterial Bioconversion of Macroalgal Biomass François Thomas	Functional Ecology of Rafting Fauna Associated with Sargassum Blooms at the Mexican Caribbean Jorge Manuel López-Calderón
11:15 AM - 11:30 AM	Restoration and conservation of global seaweed stocks Cicilia Kambey	The Chemical Language of The Seaweed Holobiont Mahasweta Saha	How Ulva Blooms: Linking Genetic Variation to the Growth of Ulva Compressa Emma Coulembier Vandelannoote
11:30 AM - 11:45 AM	An Overview of Innovative Methods for Tropical Seaweed Restoration Phaik Eem Lim	Advances in Algal Growth and Morphogenesis Promoting Factors in Green Macroalgae Within Fundamental and Applied Research Thomas Wichard	Nutrient Contents and Stoichiometry of Pelagic Sargassum in a Changing World Brian Lapointe
11:45 AM - 12:00 PM	Progressive Management Pathway for Improving Seaweed Biosecurity for Restoration Elizabeth Cottier-Cook	Chemical Signalling During Oomycete Eurychasma Dicksonii Infection in the Model Brown Alga Ectocarpus Siliculosus Puja Kumari	Sargassum events in the Mexican Caribbean: An integrative review Erika Fabiola Vázquez-Delfín
12:00 PM - 12:15 PM	Coupling the conservation of wild seaweeds with the seaweed industry Juliet Brodie	Chemical Ecology of the Kelp Holobiont Soizic Prado	Multi-Year Renewal of Green Tides: 18 Years of Algal Mat Monitoring (2003-2020) on French Coastline (Brittany Region) Justine Louis
12:15 PM - 12:30 PM	Recognising Seaweeds: Addressing Gaps in International Biodiversity Frameworks for Global Seaweed Protection Shaun Beattie	Spatio-Temporal Dynamics of Chemical Interactions Between Taonia Atomaria and Its Epibacterial Community Benoît Paix	Predicting Seaweed Drift: How Hydrodynamic Factors, Morphology, and Bottom Structure Determine Movement Patterns Friederike Gronwald

O 2.9 - Ecology of Seaweeds	MS 2.3 - Advancing Food Systems through Traditional Knowledge Sharing	O 2.10 - Aquaculture: Processing and Applications	O 2.11 - Life Cycle and Reproduction
Esquimalt	Salon BC (Carson Hall)	Sidney	Colwood
Does Grazing Pressure Induce Bromoform Production in the Methane Mitigating Red Seaweed <i>Asparagopsis taxiformis</i> ? Kanisha Contractor	Advancing Food Systems through Traditional Knowledge Sharing Libby Swanepoel	Next Steps in Seaweed Fermentation: Exploring Co-Fermentation to Improve Fermented Seaweed Ingredients Evangelia Zioga	Effects of Temperature on the Sex Ratio of <i>Nereocystis Luetkeana</i> Gametophytes Taylor Hughes
Interactive Effects of Gametophytes and Grazers On Kelp Recruitment Kaitlyn Tonra	Building Knowledge Systems: A Peer-Led Exchange on Seaweed Traditions in Samoa and Kiribati Ulusapeti Tiitii & Taati Eria	From Sea to Table: Innovative Processing for Seaweed as Sustainable Food Susan Løvstad Holdt	Mating Strategies in Reds: Animal-Mediated Fertilization and Sexual Selection in <i>Gracilaria gracilis</i> Myriam Valero
Effects Of Different Algal Species On Feeding Rates Of Purple Sea Urchins Fox Melo	Honouring Tradition, Innovating for the Future: Advancing Edible Products in Fiji Jimaima Lako	Salt Pickling and Brining as a Post-Harvest Treatment to Prolong Shelf-Life of Greenlandic Sugar Kelp (<i>Saccharina Latissima</i>) and Winged Kelp (<i>Alaria Esculenta</i>) Caroline Østergaard Klein	Omics-Driven Insights for Advancing <i>Palmaria Palmata</i> Aquaculture as a Functional Food Pierre Liboureau
Conservation Versus Cultivation: Addressing Sea Turtle Conflicts in the Expanding Seaweed Industry Abdul Rahman Hassan	The Changing Nature of Edible Seaweeds in Fiji: Understanding Supply and Access Through Market Data and Women's Insights Shirleen Bala & Cherie Whippy	Physicochemical-, and Bioactive Properties of Acid Preserved <i>Alaria Esculenta</i> and <i>Saccharina Latissima</i> During Storage Anna Thora Hrólfssdóttir	As Time Goes By: The Remarkable Longevity of the Red Alga <i>Gracilaria gracilis</i> Christophe Destombe
Exploring Links Between Macroalgal Detritus and Marine Decomposer Communities Using ITS2 Metabarcoding Molly Crowe	Seaweed Production in Solomon Islands: Nature-Based Approach to Navigating Climate, Ecological and Environmental Challenges Kofi Otumawu-Apreku	Evolution of Volatiles and Sensorial Properties of Industrially Dried <i>Ulva Fenestrata</i> During Storage Mar Vall-Llosera Juanola	Reproductive Strategies and Genetic Diversity in the Red Algae <i>Palmaria palmata</i> : Effect of Sexual Dimorphism and Implications for Sustainable Aquaculture in a Variable Environment Aurélien Baud
Shifts In Macroalgae Composition Alters Carbon Flow in Coastal Baltic Sea Ecosystems: Implications for Dissolved Organic Carbon Bioavailability and Flux Jack Hall	Advancing Sustainable Seaweed Food Systems through Traditional Knowledge Sharing Silva Larson	Beyond the Hype: What's Working Across the North American Kelp Industry and Why Kendall Barbery	The 2024 Oregon Kelp Forest Status Report: Signs of Loss, Signs of Life Sara Hamilton

TUESDAY, MAY 6

THEME:	MS 2.1 - Restoration and Conservation of Global Seaweed Stocks	MS 2.2 - The Chemical Language of the Seaweed Holobiont	O 2.8 - Ecology of Algal Blooms
ROOM:	Lecture Theatre	Saanich	Oak Bay
12:30 PM - 12:45 PM	Discussion	Mapping the Metabolome of the Holobiont Under Climate Change: A Perspective from Algae and Their Associated Microbes Marine Vallet	A Sargassum BioRefinery to valorize uncontrolled blooms of brown macroalga Jose Avalos
12:45 PM - 01:00 PM		Discussion	
01:00 PM - 02:00 PM	Lunch Break Location: Tented Area, Royal BC Museum, 675 Belleville Street		
02:00 PM - 03:00 PM	Seaweed Forests in a Warming Ocean: Consequences of Loss and Hopes for the Future Dr. Karen Filbee-Dexter		
03:00 PM - 04:30 PM	Poster Session I Location: Pre-Function 1A, Level 1 & Salon BC & Foyer, Level 2		
	Afternoon Coffee Break		
THEME:	MS 2.4 - Diverse Pre-Treatment Processes for Macroalgae Conversion and Utilisation	O 2.12 - Ecology and Reproduction	O 2.13 - Distribution Shifts
ROOM:	Lecture Theatre	Saanich	Oak Bay
04:30 PM - 04:45 PM	Pilot-Scale Steam Explosion: A Novel Pre-Treatment Route for High Value Compound Release from Nuisance Ulva Species Jessica Adams	Investigating Patterns in Kelp Recruitment Across the Oregon Coast Sarah Sellke	An Overview of the Resilience and Persistence of Kelp Forests in the Salish Sea of British Columbia Alejandra Mora-Soto
04:45 PM - 05:00 PM	Ultrasonic Extraction of Fucoidan from Wracks Following Wet Milling Andrew Ross	Unlocking the Secret Microscopic Life of Kelp: Assessing Gametophyte Longevity in Kelp Forest and Urchin Barren Ecosystems Lauran Liggan	Shifts In Kelp Forest Structure and Performance Under Ocean Warming: Linking Historical and Contemporary Field Surveys with Experimental Approaches Nora Salland
05:00 PM - 05:15 PM	Hydrodynamic Cavitation Pre-Treatment for Intensified Macroalgal Valorisation Sanjay Nagarajan	Kelp Lessonia Corrugata Reproduction Varies with Season and Water Motion Allyson Nardelli	Ecological Stability and Shifts on Temperate Reefs in the Anthropocene Dan Smale

O 2.9 - Ecology of Seaweeds	MS 2.3 - Advancing Food Systems through Traditional Knowledge Sharing	O 2.10 - Aquaculture: Processing and Applications	O 2.11 - Life Cycle and Reproduction
Esquimalt	Salon BC (Carson Hall)	Sidney	Colwood
The Green Macroalga Caulerpa Prolifera Replaces Seagrass in a Nitrogen Enriched, Phosphorus Limited, Urbanized Estuary Rachel Brewton	Advancing Sustainable Seaweed Food Systems through Traditional Knowledge Sharing Silva Larson	Beyond the Hype: What's Working Across the North American Kelp Industry and Why Kendall Barbery	Towards a genetic framework for photodevelopment in the brown alga Ectocarpus Frej Tulin
Variability In Ascophyllum Nodosum Growth Rates as Determined by Multiyear Sampling across a Wide Geographic Range Bryan Morse	Discussion	Promotion of the Developed Seaweed Drying Technology to Small-Scale Seaweed Farmers Ronel Pangan	Long-Term Trends in Kelp Forests of San Diego: Local Implications for Macrocystis Population Structure and Future Restoration Mohammad Sedarat

Lunch Break

Location: Tented Area, Royal BC Museum, 675 Belleville Street

Seaweed Forests in a Warming Ocean: Consequences of Loss and Hopes for the Future
Dr. Karen Filbee-Dexter

Poster Session I

Location: Pre-Function 1A, Level 1 & Salon BC & Foyer, Level 2

Afternoon Coffee Break

O 2.14 - Microbiome of Seaweeds 3	MS 2.5 - Global Climate Change, Algal Biodiversity Distribution and Ecology	O 2.15 - Applications of Seaweeds	O 2.16 - Applications: Biopolymers
Esquimalt	Salon BC (Carson Hall)	Sidney	Colwood
Significant improvement in Asparagopsis armata seaweed growth using seaweed-derived bacterial probiotics Lucien Alperstein	Marine Algal Biodiversity Change in Hong Kong, China Put Jr Ang	Optimizing the Economic Value of Gracilaria sp. through Multi-stream Zero Effluent Processing Technology Boedi Julianto	Production of Thermoformable Sheets from Ulva Extracts Eitan Salomon
Quantifying Bacterial Assemblages Associated with Both Farmed and Wild Populations of Saccharina Latissima Across the Aquaculture Growing Season in SW England Jasmine Ramshaw	New and Interesting Seaweed Records from the Hakai Area of the Central Coast of British Columbia, Canada: An Update Sandra Lindstrom	SeaMark: Seaweed-based Market Applications can drive the scale-up of seaweed cultivation and processing in Europe Urd Grandorf Bak	Effects of plasticisers on the mechanical and physical properties of sodium alginate films Luke Barnett
Predatory Microorganisms: Missing Component of the Seaweed Holobiont Frederik De Boever	Global Climate Change and Algal Biodiversity Distribution and Ecology Jeong Ha Kim	Screening of Farmed Atlantic Nori Strains: Unlocking Their Full Potential for High-Value Applications Madalena Caria Mendes	From Seaweed To Success: The Remarkable Rise and Fall of the Danish Agar Empire Susan Løvstad Holdt

TUESDAY, MAY 6

THEME:	MS 2.4 - Diverse Pre-Treatment Processes for Macroalgae Conversion and Utilisation	O 2.12 - Ecology and Reproduction	O 2.13 - Distribution Shifts
ROOM:	Lecture Theatre	Saanich	Oak Bay
05:15 PM - 05:30 PM	Process Optimization and Intensification of Sodium Alginate Production from Sargassum using Chemical Leaching Keeran Ward	Examining Drivers of Spatial and Temporal Trends in the Reproduction of Four Prevalent Intertidal Macrophytes Along the Oregon Coast Megan Davis	Regional Climate Trends Shift Kelp Forest Distribution and Community Structure in Coastal British Columbia Brian Timmer
05:30 PM - 05:45 PM	One Method Does Not Fit All: Investigating Variable Pretreatment and Enzyme Hydrolysis Parameters for Bioethanol Production from Different Seaweeds Emily Kostas	From Fundamental Biology to Successful Life Cycle Control in European Bladed Bangiales (Porphyra/Pyropia) to Advance North Atlantic Nori Cultivation Jessica Knoop	Drivers and Patterns of Macroalgal Community Shifts in the Atlantic Waters of France Anaëlle Bizien
05:45 PM - 06:00 PM	Enzymatic Treatments for the Valorisation of Seaweed Biomass Jessica Adams	Kelp Species Identity and Local Environmental Conditions Drive Patterns in Bryozoan Cover Among Western Canada's Undersea Forests Alyssa Allchurch	Substantial Short-Term Increases in Brown Macroalgal Cover and Total Macroalgal Biomass with Decreased Sea Ice on the Western Antarctic Peninsula Chuck Amsler
06:30 PM - 10:00 PM	25th Anniversary Dinner Gala Location: Crystal Garden		



O2.14 - Microbiome of Seaweeds 3	MS 2.5 - Global Climate Change, Algal Biodiversity Distribution and Ecology	O 2.15 - Applications of Seaweeds	
Esquimalt	Salon BC (Carson Hall)	Sidney	
Temporal Changes in Growth and Natural Products Following Bacterial Disruption in the Red Seaweed <i>Asparagopsis Taxiformis</i> Silvia Blanco Gonzalez	Green Alga <i>Halimeda</i> : From Diversity to Applications Jaruwan Mayakun	Optimizing Greener Alginate Extraction from Kelp for Bioplastic Applications Hayley Smith	
Towards a Global Understanding of Kelp Holobionts Nathan King	Climate-Induced Range Shifts Shaped the Present and Threaten the Future Genetic Variability of a Marine Brown Alga in the Northwest Pacific Zi-Min Hu	Effects of Supplementing Canadian Derived Sugar Kelp (<i>Saccharina latissima</i>) and Red Seaweed (<i>Mazzaella japonica</i>) on the Enteric Methane Production of Beef Cattle John Church	
	Discussion		

25th Anniversary Dinner Gala
Location: Crystal Garden





Tanzania's Seaweed Pioneers

CULTIVATE



We cultivate more than seaweed—we nurture relationships with thousands of farmers and create economic opportunities in coastal communities.

SUSTAIN



Our farming methods protect marine ecosystems while our community investments in education, clean water, and healthcare push for lasting opportunities for coastal villages.

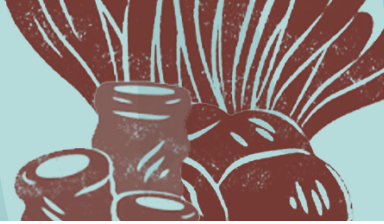
INNOVATE



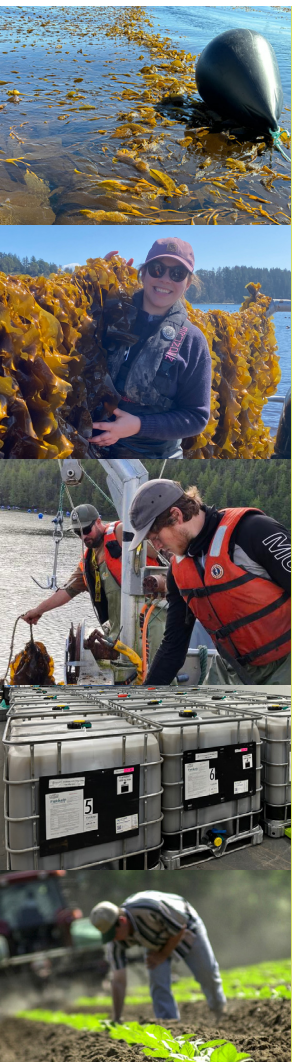
Innovation drives our success through thoughtful solutions that enhance both farmer wellbeing and product quality, while continuously expanding seaweed's applications across industries from food to sustainable materials.

Partner with us: www.cweedmwani.com

WEDNESDAY, MAY 7



TIME:	SESSION:
09:00 AM - 01:30 PM	Mid-Symposium Tour #4 Whale Watching with Eagle Wing Tours Location: Offsite
10:00 AM - 12:00 PM	Dakini Tidal Wilds Drop-In Event Location: Saanich, Level 1
11:00 AM - 01:00 PM	Workshop #7 Seaweed Cyanotyping Photography - Location: TBD
01:00 PM - 04:00 PM	Mid-Symposium Tour #9 Tour and Social Hour at Industrial Plankton - Location: Offsite
01:00 PM - 05:00 PM	Seaweed on the Silver Screen Location: Lecture Theatre, Level 2
03:00 PM - 04:30 PM	Workshop #8 Thalassotherapy: Ocean Medicine for Opulent Health - Location: Sidney, Level 2
04:30 PM - 07:00 PM	Mid-Symposium Tour #10 Clover Point Intertidal Tour - Location: Offsite
05:30 PM - 08:00 PM	blueTIDES After Dark Location: CRAFT Beer Market, 450 Swift St, Victoria, BC



Cascadia SEAWEED

for a healthy planet

**Responsibly cultivated kelp
transformed into biostimulants and
agrifeeds for large-scale farmers.**

We also offer nature-based solutions, delivering products and services for kelp restoration, biodiversity monitoring, and the creation of equitable, profitable seaweed value chains.

Interested? Find us in the exhibition hall.

www.cascadiaseaweed.com

***Welcome to
Victoria,
British Columbia!***

*The team at
Cascadia Seaweed
is pleased
to support the
25th Anniversary
of the
International
Seaweed
Symposium!*

***Have a
wonderful week!***

THURSDAY, MAY 8

08:30 AM - 09:30 AM	Endeavours to Sustain the Tropical Eucheumatoid Seaweed Farming Industry: Biodiversity Assessment, Biobanking, Phenotyping, Novel Strain Selection, and Revitalizing Farming Practices Dr. Michael Y. Roleda Location: Salon BC, Level 2		
09:30 AM - 10:30 AM	Special Panel - Seaweeds and People Mrs. Melania Lynn Cornish & Dr. Bridgette Clarkston & Location: Salon BC, Level 2		
10:30 AM - 11:00 AM	Morning Coffee Break		
THEME:	MS 3.1 - Challenges in Red Seaweed Cultivation by Vegetative Propagation: Genetic Issues and Solutions from Tropical to Temperate Waters	O 3.1 - Farmed Seaweeds	O 3.2 - Restoration
ROOM:	Lecture Theatre	Saanich	Oak Bay
11:00 AM - 11:15 AM	Eucheumatoid Production in Southeast Asia: Existing Threats and Research Progress in Genetic Selection Phaik Eem Lim	Improving Kelp Production Methods on the West Coast of Scotland – Findings from the ASTRAL Project Kati Michalek	Kelp Forest Restoration Successes & Roadblocks: Insights from the Kelp Rescue Initiative's First 3 Years Jasmin Schuster
11:15 AM - 11:30 AM	Industrial-scale On-land Cultivation of Chondrus crispus and Palmaria palmata in Canada, History and Advancements Jeff Hafting	Optimising the out-planting of Macrocystis pyrifera for cultivation in Southern Australia Wouter Visch	Marine Forest Project: Restoring Oceans, A solution to Climate Change Chae Song Kim
11:30 AM - 11:45 AM	Open-sea cultivation of gracilarioids: The current state of Gracilaria chilensis cultivation in Chile Alejandro Buschmann	Spatial and temporal variation in the biomass composition of the novel New Zealand aquaculture targets Lessonia variegata and Lessonia septentrionalis Rebecca Lawton	Attempt To Estimate the Biomass of the Sargassum Forest by Side Scan Sonar Hajime Okawa
11:45 AM - 12:00 PM	Challenges of Eucheumoid Production in East Indian Ocean Region Sébastien Jan	Impact of long-term seawater temperature rise on wakame aquaculture and development of technology to increase production Yoichi Sato	Could Seaweed Aquaculture Restore Biodiversity? A Study Quantifying Biodiversity in and Around Seaweed Aquaculture in the Faroe Islands Sophie Koch
12:00 PM - 12:15 PM	Land-Based Cultivation of Red Macroalgae in Hawai'i Simona Augyte	Challenges Ahead of the Giant Kelp Farming Industry of China and Solutions to Cope With Shao Jun Pang	Accelerating Kelp Forest Restoration by Understanding and Leveraging Natural Recovery Mechanisms Joshua Smith

Endeavours to Sustain the Tropical Eucheumatoid Seaweed Farming Industry: Biodiversity Assessment, Biobanking, Phenotyping, Novel Strain Selection, and Revitalizing Farming Practices

Dr. Michael Y. Roleda

Location: Salon BC, Level 2

Special Panel - Seaweeds and People

Dr. Bridgette Clarkston & Mrs. Melania Lynn Cornish

Location: Salon BC, Level 2

Morning Coffee Break

O 3.4 - Adaptation to Changing Climate	MS 3.2 - The Indigenous Seaweed Revolution: Building a Collective and Navigating Toward Abundance	O 3.5 - Aquaculture and Harvest Sites	O 3.6 - Regulatory Frameworks
Esquimalt	Salon BC (Carson Hall)	Sidney	Colwood
Enhancing Growth and Climate Adaptation in Tropical Red Seaweed Through Depth Cycling Loretta Roberson	Cultivating Seaweed for Carbon Removal While Refusing Offset Models: on the Critical Need for Indigenous, Environmental, and Climate Justice Approaches Andrew Kalani Carlson	Optimising Marine Space: A GIS-Based Assessment of Seaweed Aquaculture Potential and Colocation with Offshore Wind in the UK EEZ Ethan Clark	Building Washington State's Plan for Kelp and Eelgrass Recovery: Lessons Learned for Global Practitioners Cynthia Harbison
How Bacteria Colonize the Kelp Saccharina Latissima throughout the Farming Cycle Siobhan Schenk	An Example of Inherited Stewardship (Kaitiakitaka) in Te Wai Pounamu, New Zealand Suzi Flack	Expanding the Capacity for Culinary Seaweed Cultivation and Use in Southern California Kalani Ortiz	From Potential to Profit: Strategic Challenges and Opportunities in European Seaweed Cultivation Sander Van Den Burg
How To Support the Adaptation of the Red Seaweed Supply Chain in Tanzania to Environmental Shocks and Stresses? Virginie Le Masson	Building Pilina: A Foundation for Community-Driven Restoration of Limu Kohu (Asparagopsis taxiformis) Samantha Emmsley	Open Water Cultivation Potential of Saccorhiza Polyschides – A Scottish Case Study Michele Stanley	A Landscape View of Ascophyllum Nodosum (L.) Le Jolis Management and Harvesting Impacts in Southwestern Nova Scotia Canada Glyn Sharp
Genetic Outcomes of Kelp Forest Restoration Georgina Wood	Incorporating Indigenous Insights: Practical Approaches to Cultural Consciousness in the Workplace Kaleiolani Haanio Pasciuta	Mapping Submerged Wild Kelp Biomass on the East Coast of Canada using Topo-bathymetric Lidar Tim Webster	Interactive Mapping of Submerged Aquatic Vegetation at Scale Using Satellite Technology Joshua Jon van Berkel
Climate Change Impacts on Kelp Early Life-Stages: The Influence of Temperature and Salinity Veronica Farrugia Drakard		Sustainability of Wild Seaweed Harvesting along the South African Coastline Deidre Du Toit	Policy Insights and Lessons Learned in Scaling Tropical Seaweed Cultivation in Malaysia: The Seaweed Intervention Programme (SIP) Analysis Adibi Rahiman Nor

THURSDAY, MAY 8

THEME:	MS 3.1 - Challenges in Red Seaweed Cultivation by Vegetative Propagation: Genetic Issues and Solutions from Tropical to Temperate Waters	O 3.1 - Farmed Seaweeds	O 3.2 - Restoration
ROOM:	Lecture Theatre	Saanich	Oak Bay
12:15 PM - 12:30 PM	Generating New Eucheumatoid Cultivars by Mutagenesis in a Background of Vegetative Propagation Shashibhushan N B	The Efficacy of Seeding from Gametophytes in Nova Scotian Sugar Kelp Aquaculture Kit Tymoshuk	Learning through Action: Experimental Bull Kelp Restoration Provides Insights on Decline and Pathways to Recovery Hilary Hayford
12:30 PM - 12:45 PM	Discussion	The Seaweed Potential of India; Status and Road Ahead Stefan Kraan	Automated Techniques in Estimating Seaweed Biomass on Reefs Sasi Nayar
12:45 PM - 01:00 PM		Land-Based Systems Facilitate Selective Breeding Advancements for Open Ocean Seaweed Aquaculture Daniel Gossard	A Worldwide Review of Harvesting Regulations for <i>Ascophyllum nodosum</i> in Relation To Ecosystem-Based Management Jean-Sebastien Lauzon-Guay
01:00 PM - 02:00 PM	Lunch Break		
02:00 PM - 03:00 PM	Innovation Challenges in Seaweed Aquaculture Dr. Jang K. Kim Location: Salon BC, Level 2		
03:00 PM - 04:30 PM	Poster Session II Location: Pre-Function 1A, Level 1 & Salon BC & Foyer, Level 2		
	Afternoon Coffee Break		



O 3.4 - Adaptation to Changing Climate	MS 3.2 - The Indigenous Seaweed Revolution: Building a Collective and Navigating Toward Abundance	O 3.5 - Aquaculture and Harvest Sites	O 3.6 - Regulatory Frameworks
Esquimalt	Salon BC (Carson Hall)	Sidney	Colwood
Effects of pH, temperature and light on the carbon metabolism of early life stages of <i>Macrocystis pyrifera</i> (Ochrophyta, Laminariales) Barbara Labbe	Nuu chah nulth Seaweeds: A West Coast Whaling Perspective on First Nation Use and Governance of Intertidal Resources. Kristine Gatzke	A Risk Assessment of <i>Gracilaria Vermicophylla</i> in Danish Fjords Waters and Its Potential to Become a Candidate for Land IMTA Systems Susan Løvstad Holdt	Analysis of Socio-political Elements of the Emerging British Columbia Kelp Aquaculture Industry Taylor Reidlinger
Kelp Extent and Cover Across the Canadian Arctic: Improved Dataset and Bayesian Modeling Camille Lavoie	Seaweed: Bridging Aboriginal Knowledge and Modern Innovation Sarah Gorst	Asparagopsis in the Great Barrier Reef: Ecological Insights for Sustainable Utilisation Najeen Arabelle Rula	Unlocking the Potential of Africa's Seaweed Sector for Sustainable Blue Economy Development Bernice McLean
Spotlight on the canopy, shadows on the understory: gaps in kelp thermal tolerance research Rosie Harris	Extending the yarn: in conversation with Indigenous elders on cultural connections to Sea Country and the importance of Traditional Knowledge in protecting coastal ecosystems Ken Jones	Unintended consequences of using inorganic fertilizer in commercial tropical eucheumatoid seaweed farming Michael Y. Roleda	Products from Farmed Seaweed: Recommendations for Precautionary Marine Allergen Labelling Céline Rebours

Lunch Break

Innovation Challenges in Seaweed Aquaculture

Dr. Jang K. Kim

Location: Salon BC, Level 2

Poster Session II

Location: Pre-Function 1A, Level 1 & Salon BC & Foyer, Level 2

Afternoon Coffee Break

THURSDAY, MAY 8

Theme	MS 3.3 - Coralline Algal Evolution and Their Responses to Climate Change	O 3.7 - Restoration Methods	O 3.8 - Aquaculture Methods
Room	Lecture Theatre	Saanich	Oak Bay
04:30 PM - 04:45 PM	Effects of Ocean Acidification on Coralline Algae in the Context of Multiple Drivers of Climate Change Christopher Cornwall	Advancing Bull Kelp Restoration Using Arrays to Recover Kelp Ecosystem Vegetation (Arkev) and Vegetative Drift Kelp Supplements Tristin Anoush McHugh	A Review of the Ecological Impact of the Harvest of <i>Ascophyllum Nodosum</i> in the North Atlantic Raul Ugarte
04:45 PM - 05:00 PM	Predicting CO2 Budgets Across Diverse Coralline Lineages Luka Wright	Enabling Scalable Restoration for Marine Ecosystem Resilience Majid Hajibeigy	Kelp Hatchery Innovation; Natural Fibers and Novel Fertilizer Tamsen Peeples
05:00 PM - 05:15 PM	Transgenerational Coralline Algal Growth and Recruitment in Response to Future Drivers of Global Change Denisa Berbece	Exploring the Potential for Multiple Kelp Recovery Techniques to Produce Self-Sustaining Bull Kelp Forests Benjamin Grime	Precision' V 'Traditional' kelp farming; How do they differ and which path allows for large scale kelp farming and rewilding on an industrial scale Alexander Ebbing

O 3.9 - Gastronomy	MS 3.4 - Genomics and Selectively Breeding Economically Important Kelp of the Eastern Pacific and North Atlantic	O 3.10 - IMTA	O 3.11 - Carbon Cycling 2
Esquimalt	Salon BC (Carson Hall)	Sidney	Colwood
Seaweed and the Portuguese Gastronomy Helena Abreu	Genomic Approaches to Investigate Brown Algal Biology and Support Brown Algal Breeding J. Mark Cock	Cultivation of <i>Ulva Mutabilis</i> in Association to a Land-Based Sole Aquaculture Aires M. Duarte	Quantifying the Carbon Sequestration Potential of Kelp Farming Maxine Canvin
Residual Macroalgal Biomass for Single Cell Protein (SCP) Production through Fermentation Using Sequential Bioreactors Maria Teresa Cesário	A Reference Genome for North American <i>Saccharina Latissima</i> : Advancing Kelp Breeding through Development of Genomic Tools Kelly DeWeese	Composition and Morphometric Variations of Kelp Co-Cultivated with Atlantic Salmon in an Integrated Multi-Trophic Aquaculture System in Ireland Hussein Ahmad Hussein Qulatein	Algae To Alkanes: New Insights into the Potential of Alkanes as Detrital Biomarkers from Kelp Degradation Experiments Stina Kolodzey
Optimizing Seaweed Fermentation: The synergistic role of lactic acid bacteria and yeast for a safe preservation Cecilie Heide	Enhancing Sugar Kelp Breeding (<i>Saccharina Latissima</i>) Efficiency Using Genomic Selection Yaoguang Li	Diversification of Aquaculture Production and Development for High Added Value Markets (Dival) Rémy Michel	Incremental Stable Isotope Analysis of Polar Macroalgae: An Insight into Seasonal and Multi-Annual Growth and Nutrient Cycles Freyja Alldred

oceanrainforest.com

THE FUTURE LIES ***BENEATH THE WAVES***



OCEAN RAINFOREST

THURSDAY, MAY 8

Theme	MS 3.3 - Coralline Algal Evolution and Their Responses to Climate Change	O 3.7 - Restoration Methods	O 3.8 - Aquaculture Methods
Room	Lecture Theatre	Saanich	Oak Bay
05:15 PM - 05:30 PM	Comparing Physiological and Molecular Responses of Coralline Algae to Climate Stress Emmaeve Jourdain	Assessing An Understory Alga's (Desmarestia Sp.) Ability to Inhibit Urchin Grazing and Promote Bull Kelp Survivability Brayden Wiley	Advances in Hatchery Research for Kelps in Southern Australia Jakop Schwoerbel
05:30 PM - 05:45 PM	Is Colour a Reliable Metric of Stress in Coralline Algae? Elliot Porcher	Biochar: A Supplemental Material to Increase Survivability and Scalability of Kelp Cultivation and Habitat Restoration Bruce Bradley	Creating Opportunities for Bull Kelp (rimurapa) Aquaculture Jessica Roach
05:45 PM - 06:00 PM	Calcification in Coralline algae Michael Borowitzka	Seaweed, People and Place Kelsey Miller	Exploring Temperature Priming to Enhance Growth and Stress Tolerance in Saccharina Latissima for Kelp Aquaculture Niko Steiner
06:30 PM - 08:00 PM	Early Career Researchers Panel Discussion Location: Lecture Theatre		
	Industry Night Location: Parkside Hotel, 810 Humboldt Street, Victoria, BC		

O 3.9 - Gastronomy	MS 3.4 - Genomics and Selectively Breeding Economically Important Kelp of the Eastern Pacific and North Atlantic	O 3.10 - IMTA	O 3.11 - Carbon Cycling 2
Esquimalt	Salon BC (Carson Hall)	Sidney	Colwood
Using Multispectral Imaging (MSI) to Evaluate Physicochemical-, Antioxidant-, and Sensorial Properties of Cultivated Brown Seaweed Anna Thora Hrólfsdóttir	A Scaffolded and Annotated Reference Genome of Giant Kelp (<i>Macrocystis pyrifera</i>) Gary Molano	Why Ulva in Land-Based IMTA with Invertebrates Works Commercially in South Africa: Cost Saving and Circularity, Feed Provision, Microbiome Enhancement and System Health John Bolton	Comparing Carbon Standing Stock Estimates Between Kelp Beds in the Southern Salish Sea Miranda Roethler
	Genomic and Genetic Tools for Kelp Improvements Michael Marty-Rivera	Seaweed Solutions – Innovative-high Moisture Ensiling for a Circular Bioeconomy Priya Pollard	Kelp Forests as an Emerging Blue Carbon Pathway: Dissolved Organic Carbon (DOC) from <i>Macrocystis pyrifera</i> In Response to Temperature and Seasonality Lais Lima
	Discussion		

Early Career Researchers Panel Discussion

Location: Lecture Theatre

Industry Night

Location: Parkside Hotel, 810 Humboldt Street, Victoria, BC



FRIDAY, MAY 9

08:30 AM - 09:30 AM	Breaking the Myth of Seaweed Climate Benefits: Pros and cons of Carbon Reduction and Removal Strategies Dr. Catriona L. Hurd & Dr. Jean-Baptiste Thomas Location: Salon BC, Level 2		
09:30 AM - 10:00 AM	Coffee Break		
THEME:	MS 4.1 - Advancing the Blue Economy through Ulva Cultivation: Insights from the COST Action - SeaWheat	O 4.1 - Kelp Genomics and Strain Development	O 4.2 - Aquaculture Methods 2
ROOM:	Lecture Theatre	Saanich	Oak Bay
10:00 AM - 10:15 AM	SeaWheat COST Action – Ulva: Tomorrow's Wheat of the Sea: A Model for Innovative Mariculture Muki Shpigel	Future Ocean Warming Negatively Impacts Coastal Facilitation: The Decline of a Key Foundation Species Lucinda Kraufvelin	Growing Nereocystis luetkeana (Bull Kelp) for Commercial Mariculture in Alaska Michael Stekoll
10:15 AM - 10:30 AM	Ulva in Food, Feed, Biomaterials and Beyond Laurie C. Hofmann	Population Genomics of Saccharina latissima and Laminaria digitata Along the Coast of Maine Rene Francolini	Aeration and Power Requirements for CO ₂ -Replete Cultivation of the Red Seaweed Devaleraea Mollis (Pacific Dulse) in Land-Based Systems Gregory Rorrer
10:30 AM - 10:45 AM	Ecosystem Services of Ulva: A Systematic Review of Their Role in Natural and Cultivated Environments and Contribution to the Sustainable Development Goals Annette Bruhn	Landscape genomics of wild sugar kelp populations in Quebec and Nova Scotia: a tool for supporting the long-term sustainability of the seaweed aquaculture industry of the Canadian Atlantic coast Flora Salvo	On-land Dulse Cultivation: Ensuring Consistent and Sustainable Production Leila Hayashi
10:45 AM - 11:00 AM	Assessing Tomorrow's Packaging: A Life Cycle Study of Seaweed vs. Sugarcane-Based Alternatives Karina Balina	Improving the farm while protecting the wild: understanding drivers of genetic differentiation in kelp Griffin Hill	High Irradiance Is Required for Fast Growth of Ulva Spp.: Effects of Environmental Conditions on The Growth, Total Carbohydrate Content and Chlorophyll Fluorescence Parameters of a Tubular and Foliar Species Julie Grivotte



Breaking the Myth of Seaweed Climate Benefits: Pros and cons of Carbon Reduction and Removal Strategies

Dr. Catriona L. Hurd & Dr. Jean-Baptiste Thomas

Location: Salon BC, Level 2

Coffee Break

O 4.3 - Strain Selection	MS 4.2 - State of the World's Kelp Forests	O 4.4 - Ecology of Algal Blooms 2	O 4.5 - Response to Environmental Change
Esquimalt	Salon BC (Carson Hall)	Sidney	Colwood
Nursery development for aquaculture of southern bull kelp <i>Durvillaea potatorum</i> (order Fucales) Wouter Visch	Status and trends of the world's kelp forests: kelp stressors and declines Kira Krumhansl	Structure matters: Different canopy kelps foster distinct biological assemblages Claire Attridge	Using Museum Seaweed Herbaria to Investigate Past Nitrogen Pollution Freya Alldred
Optimisation Of Gametophyte Culturing And Seeding Methods For The Novel Kelp Aquaculture Target <i>Ecklonia Radiata</i> Rebecca Lawton	State of protection of the world's kelp forests Jennifer Caselle	One of these canopies (is not like the other); biodiversity and biomass contrasts between <i>Macrocystis</i> and <i>Nereocystis</i> kelp forests in British Columbia Ondine Pontier	Unveiling key drivers of nutrient uptake in commercially important eucheumatoids: focal environmental and biological factors Bienson Ceasar Narvarte
Direct Seeding enables scaling of kelp farming Job Schipper	The Kelp Forest Challenge: Current Progress and Funding Strategies for Future Success Adriana Verges	Cameras, Computers, and Collaboration: Cutting Edge Approaches to Understanding Dynamics of Fish Biodiversity in Temperate Kelp Farms Colin Bates	The Kelp Node: Establishing a Transboundary Kelp Network Margot Hessing-Lewis
National Hatchery Network: contributing to the Australian Seaweed Industry through advancements in hatchery technology for <i>Asparagopsis</i> spp. (<i>Bonnemaisoniales</i> , <i>Rhodophyta</i>) Aline Paternostro Martins	What Matters in Indigenous-Led Kelp Forest Stewardship and Restoration Lynn Lee	Seaweed and Kelp Forests in the Central Kitikmeot: Baseline Assessments and Biodiversity Patterns Amanda Savoie	Consequences of Canopy Loss on the Ability of Understory Kelp to Withstand Marine Heat Waves Dillon Dolinar

FRIDAY, MAY 9

THEME:	MS 4.1 - Advancing the Blue Economy through Ulva Cultivation: Insights from the COST Action - SeaWheat	O 4.1 - Kelp Genomics and Strain Development	O 4.2 - Aquaculture Methods 2
ROOM:	Lecture Theatre	Saanich	Oak Bay
11:00 AM - 11:15 AM	Regulations and Policies for the Ulva Production in Europe: Responsible Research and Innovation, Convention of Biological Diversity, Nagoya Protocol and Environmental Economic Accounts Céline Rebours	The molecular basis of temperature priming for growth and resilience in <i>Saccharina latissima</i> Anne M. L. Nilsen	Temperature effects on Northern European Ulva biomass yields and quality in high nutrient cultures: Perspectives on seaweed production in land-based systems Kristoffer Larsen-Ledet
11:15 AM - 11:30 AM	Ulva Production in IMTA-RAS: Biofiltration and More José Pintado	Quantitative Trait Loci (QTL) mapping of heat tolerance and growth in the sugar kelp <i>Saccharina latissima</i> Clément Gauci	Identifying Suitable Kelp and Materials for Aquaculture of <i>Macrocystis pyrifera</i> Wouter Visch
11:30 AM - 11:45 AM	Ulva Grown on Waste Streams, Allergen Free and Magnesium Rich Stefan Kraan	Agrobacterium-mediated transformation of <i>Macrocystis pyrifera</i> (giant kelp) gametophytes to understand gene function in giant kelp Brandon Vong	
11:45 AM - 12:00 PM	Discussion		
12:00 PM - 01:00 PM	Closing Ceremony Location: Salon BC, Level 2		

O 4.3 - Strain Selection	MS 4.2 - State of the World's Kelp Forests	O 4.4 - Ecology of Algal Blooms 2	O 4.5 - Response to Environmental Change
Esquimalt	Salon BC (Carson Hall)	Sidney	Colwood
The reproductive potential of Eucheuma isiforme carposporophyte characterization and induction of carpospores release by exogenous inducers Montserrat Lopez-Yllescas	Where Kelp Forests Sit in International Policy and the Global Biodiversity Framework Aaron Eger	Sea Cabbage (Hedophyllum sessile): Fluctuating canopy cover and the impact on understory community assemblages Angelina Zuelow	Prostrate “canopy” kelps on the coast of Vancouver Island, Canada Bridget Maher
Triphasic Life Cycle Progression of novel Kappaphycus alvarezii strains under mesocosm conditions Lourie Ann Hinaloc	Art & Algae: Experimentation, Play, (And Failures) Of Artmaking Are Essential For Revealing This Ocean Intimacy To Our Human Hearts Josie Iselin	Accidental holdfast removal and macroinvertebrate bycatch caused by commercial harvesting of Ascophyllum nodosum Alison Feibel	
Optimizing culture conditions for micropropagation of Codium tomentosum Isabel Sousa Pinto	Discussion	Temporal Shifts in Biodiversity and Fauna Composition Associated with Norwegian Macroalgae Ecosystems Karine Gagnon	
		A holistic perspective on the structure and function of subarctic rhodolith beds Patrick Gagnon	
Closing Ceremony Location: Salon BC, Level 2			





**INTERNATIONAL
SEAWEED SYMPOSIUM
2025**